

I.C. ENGINE		
Type		DEUTZ TD3,6L/313
Fuel		Diesel
Number of cylinders		4 in line
Suction		Supercharged
Injection system		Direct
Ignition sequence		1.3.4.2
Capacity	cm ³	3621
Bore and stroke	mm	98 x 120
Compression ratio		18
Nominal speed laden	rpm	2200
Idling speed slow unladen	rpm	930
Max. speed unladen	rpm	2360
Power ISO/TR 14396	cv - kW	75 - 55,4
Power SAE J 1995	cv - kW	75 - 55,4
Maximum torque ISO/TR 14396	Nm	330 to 1600 rpm
Air cleaner	µm	3
Type of cooling		By water
Fan		Puller

TRANSMISSION		
Gear box		TURNER
- Type		Mechanical
- Forward/reverse selector		Electro-hydraulic
- Torque converter		SACHS
- Number of forward speeds		4
- Number of reverse speeds		4
Angle gear box		TURNER
Front axle		DANA
- Differential		Limited slip
Rear axle		DANA
- Differential		Without locking
Drive wheels		4RM Permanent
- Switch for 2/4 drive wheels		No
Front tyres		ALLIANCE
- Size		400/80-24 A325 162A8 ATG
- Pressure	bar	3
Rear tyres		ALLIANCE
- Size		400/80-24 A325 162A8 ATG
- Pressure	bar	3

ELECTRIC CIRCUIT		
Battery	STANDARD OPTION	12 V - 180 Ah - 900 A EN
Alternator		12 V - 95 A
- Type		ISKRA AAK3869
Starter		12 V - 3,2 kW
- Type		ISKRA AZE4668

BRAKE CIRCUIT		
Service brake		Non-servo hydraulic brake
- Type of brake		Multidisk brake immersed in oil
- Type of control		Foot-operated for the front and rear axles
Parking brake		Mechanical
- Type of brake		Disk on gear-box output
- Type of control		Manual

SOUND AND VIBRATION		
Sound pressure level in the driver's cab LpA (according to standard NF EN 12053)	dB(A)	78 (cab closed) ; xx (cab open)
Sound pressure (according to directive 2009/76)	dB(A)	xx (cab closed) ; xx (cab open)
Sound pressure level ensured in the LwA environment (according to directive 2000/14/EC modified by directive 2005/88/EC)	dB(A)	104 (measured) ; 104 (ensured)
Sound level in motion (according to directive 2009/63)	dB(A)	xx
Average weighted acceleration on driver's body (according to standard NF EN 13059)	m/s ²	1,1
The average weighted acceleration transmitted to the driver's hand/ arm system (according to standard ISO 5349-2)	m/s ²	< 2,5
Standard seat vibration	m/s ²	xx (lightweight operator) ; xx (heavyweight operator)

HYDRAULIC CIRCUIT			
Hydraulic pump			
- Type		Gear type with flow divider	
		1st casing	2nd casing
- Capacity	cm ³	44	8
- Max. rating capacity unladen	l/mn	104	20
- Flow rate at 1600 rpm	l/mn	70	13
Filtration			
- Return	µm	10	
- Suction	µm	125	
Maximum service pressure		260	
- Telescoping circuit	bar	190 / 260	
- Lifting circuit	bar	260 / 260	
- Tilt circuit	bar	260 / 190	
- Attachment circuit	bar	260	
- Steering circuit	bar	140	

HYDRAULIC MOVEMENTS			
Lifting motions (boom retracted)			
- Unladen lifting	s - m/mn	8 - 33,8	
- Laden lifting	s - m/mn	9 - 30	
- Unladen lowering	s - m/mn	5,5 - 49,1	
- Laden lowering	s - m/mn	5,5 - 49,1	
Telescoping motions (boom raised)			
- Unladen extending	s - m/mn	13,3 - 23,1	
- Laden extending	s - m/mn	13,5 - 23,5	
- Unladen retracting	s - m/mn	8,3 - 37,6	
- Laden retracting	s - m/mn	8,4 - 37,1	
Tilting movements			
- Unladen digging	s - °/s	3 - 48,7	
- Forward tilting unladen	s - °/s	2,9 - 50,3	

SPECIFICATIONS AND WEIGHTS			
Speed of movement for lift truck in standard configuration on flat ground (except particular conditions)			
Front unladen	1	km/h	4,5
	2	km/h	7,3
	3	km/h	15
	4	km/h	26,3
Rear unladen	1	km/h	4,5
	2	km/h	7,3
	3	km/h	15
	4	km/h	26,3
Standard attachment			TFF 35 MT-1040
- Weight with forks		kg	165
- Weight of forks (each one)		kg	67,5
Rated capacity with standard attachment		kg	3175 (7000 Lb)
Tipping load at maximum reach on tyres		kg	450
Distance from the centre of gravity from the load to the lug of the forks		mm	600
Standard lifting height		mm	9000
Lift truck weight without attachment		kg	6845
Lift truck weight with standard attachment			
- Unladen		kg	7145
- At rated load		kg	10345
Weight per axle with standard attachment (transport position)			
- Front unladen		kg	3445
- Rear unladen		kg	3700
- Front rated load		kg	8745
- Rear rated load		kg	1600
Weight per axle with standard attachment (boom extended)			
- Front rated load		kg	7165
- Rear rated load		kg	430
Drag strain on the coupling hook			
- Unladen (sliding)		daN	5530
- At rated load (transmission setting)		daN	7320
Pull strain with open carrier (according to standard ISO 8313)		daN	5770

TIRES

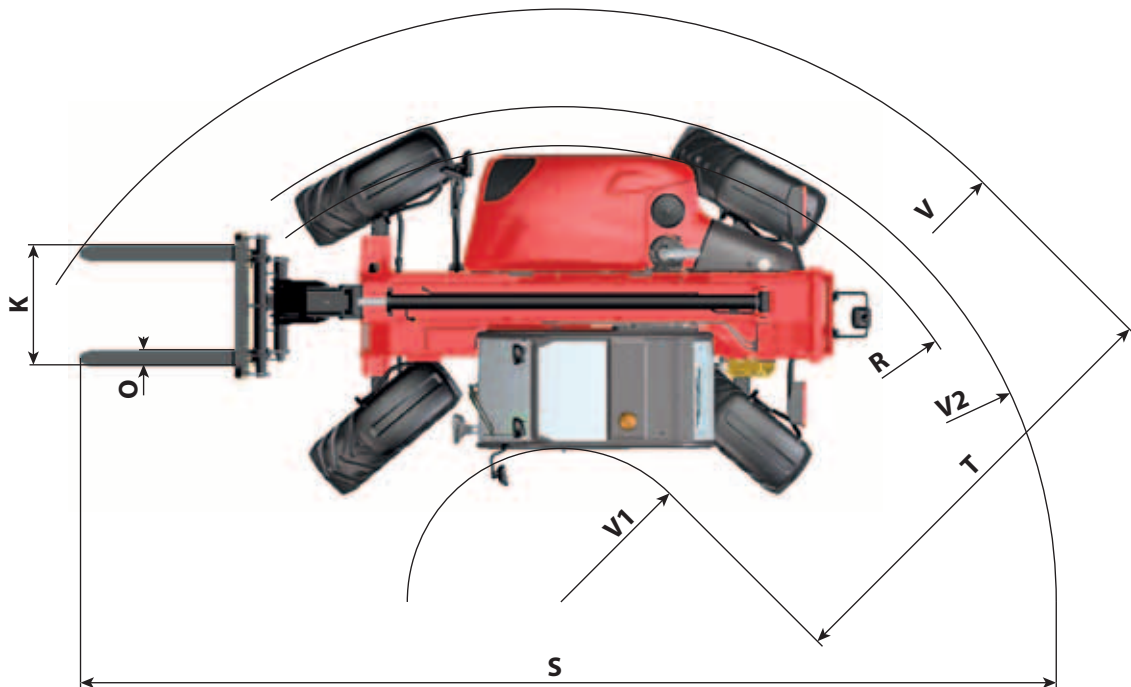
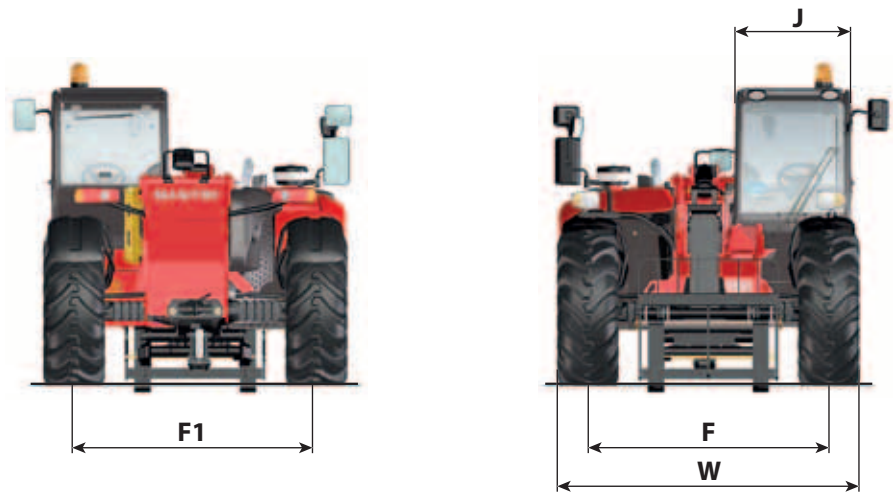
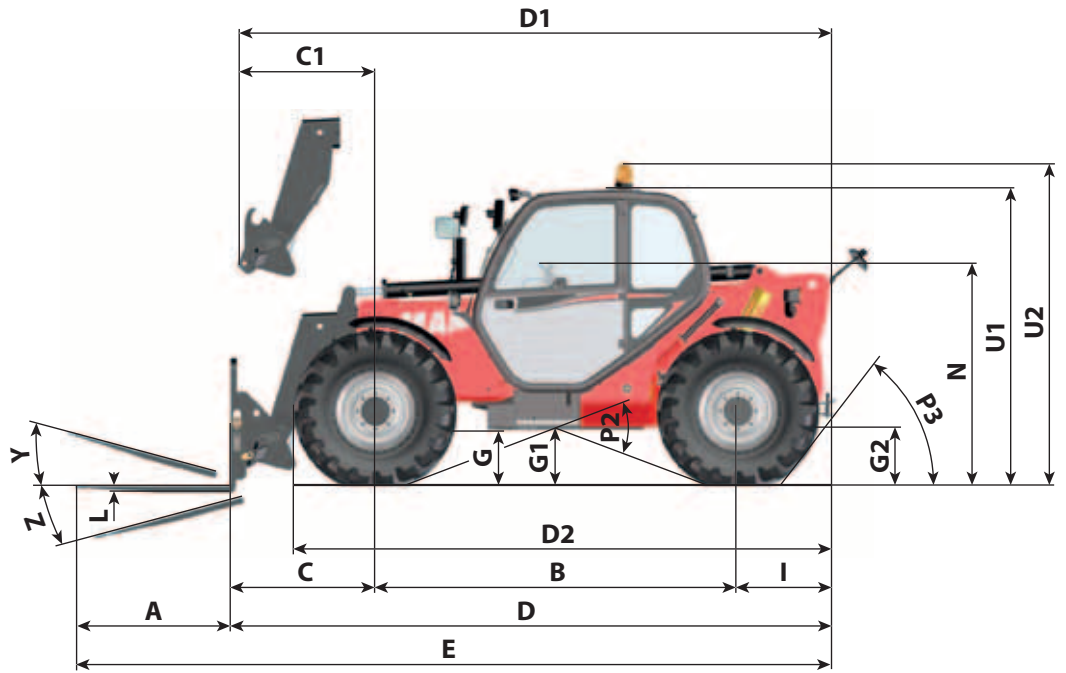
MT 732 EASY 75D ST3B S1		PRESSURE (bar)	TYRE LOAD (kg)			
			FRONT UNLADEN	FRONT LADEN	REAR UNLADEN	REAR LADEN
ALLIANCE	400/80-24 A325 162A8 ATG	3	1650	4350	1750	650
GOODYEAR	15,5/80-24 SGI 12PR TUBELESS	4				
MICHELIN	460/70R24 XMCL 159A8 TUBELESS	3,4				
	400/80-24 156A8 IND POWER CL TUBELESS	3				
	15,5R25 XHA TUBELESS	2,75				

MT 932 EASY 75D ST3B S1		PRESSURE (bar)	TYRE LOAD (kg)			
			FRONT UNLADEN	FRONT LADEN	REAR UNLADEN	REAR LADEN
ALLIANCE	400/80-24 A325 162A8 ATG	3	1700	4350	1850	800
GOODYEAR	15,5/80-24 SGI 12PR TUBELESS	4				
MICHELIN	460/70R24 XMCL 159A8 TUBELESS	3,4				
	400/80-24 156A8 IND POWER CL TUBELESS	3				
	15,5R25 XHA TUBELESS	2,75				

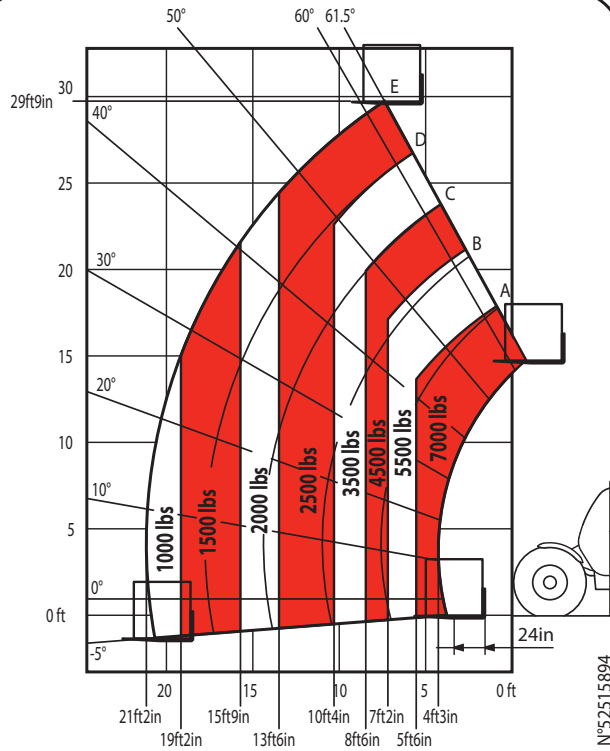
		PRESSURE (bar)	LOAD (kg)	PRESSURE ON THE CONTACT SURFACE (kg/cm ²)		AREA OF THE CONTACT SURFACE (cm ²)	
				HARD SOIL	LOOSE SOIL	HARD SOIL	LOOSE SOIL
ALLIANCE	400/80-24 A325 162A8 ATG	3	650				
			800				
			1650				
			1700				
			1750				
			1850				
			4350				
GOODYEAR	15,5/80-24 SGI 12PR TUBELESS	4	650	7,27	1,99	90	330
			800	6,95	1,84	115	435
			1650	7,86	2,14	210	770
			1700	7,94	2,16	214	786
			1750	8,02	2,18	218	802
			1850	8,18	2,22	226	834
			4350	12,08	3,18	360	1370
MICHELIN	460/70R24 XMCL 159A8 TUBELESS	3,4	650	1,46	0,45	476	1512
			800	1,54	0,52	529	1568
			1650	1,99	0,87	827	1885
			1700	2,01	0,89	843	1903
			1750	2,03	0,91	858	1922
			1850	2,08	0,94	888	1959
			4350	2,84	1,49	1519	2888
	400/80-24 156A8 IND POWER CL TUBELESS	3	650	5,12	0,53	127	1221
			800	5,41	0,63	148	1273
			1650	6,63	1,05	249	1571
			1700	6,67	1,07	255	1588
			1750	6,73	1,09	260	1606
			1850	6,83	1,13	271	1640
	15,5R25 XHA TUBELESS	2,75	650	4,03	2,27	169	297
			800	4,15	2,31	195	350
			1650	4,81	2,54	343	650
			1700	4,84	2,55	351	667
			1750	4,86	2,55	360	685
			1850	4,90	2,57	377	719
4350			5,59	2,89	774	1497	

DIMENSIONS AND LOAD CHART MT 932 EASY 75D ST3B S1

A	mm	1200
B	mm	2810
C	mm	1128
C1	mm	1064
D	mm	4696
D1	mm	4632
D2	mm	4193
E	mm	5896
F	mm	1930
F1	mm	1930
G	mm	450
G1	mm	435
G2	mm	435
I	mm	758
J	mm	890
K	mm	1260
L	mm	45
N	mm	1715
O	mm	125
P2	°	38
P3	°	53
R	mm	3685
S	mm	7620
T	mm	3460
U1	mm	2299
U2	mm	2488
V	mm	4770
V1	mm	1310
V2	mm	3800
W	mm	2340
Y	°	13
Z	°	134



MT932-75 -USA-



According norme ANSI/ITSDF B56-6-2011

N°52515894

